

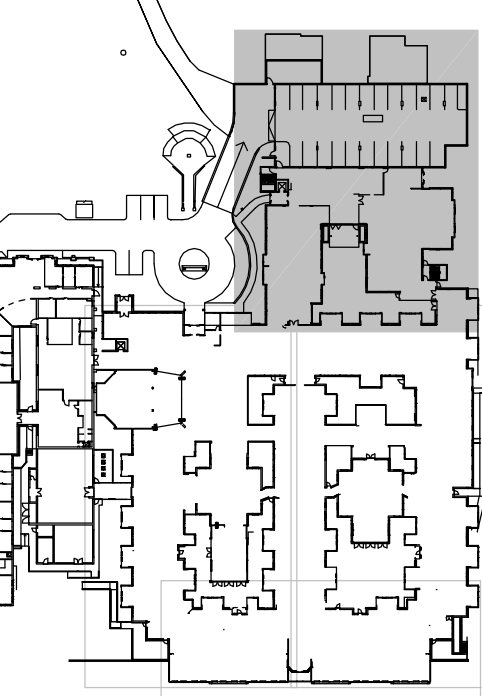
TYPICAL BEDROOM/ENSUITE LAYOUT 'A' DEMENTIA ROOM  
SCALE 1:50

### GENERAL NOTES

- REFER TO DRAWING ENL FOR APPLICABLE NOTES AND ABBREVIATIONS.

### POWER LAYOUT REFERENCE NOTES

- REFER TO REFERENCE NOTE 1, ON DRAWING ENL.
- FINAL LAYOUT OF COWPS ROOM TO BE DETERMINED ON SITE WITH THE ARCHITECT AND CLIENT.
- VENTILATION IN ROOF ABOVE FIBRE GLASSWOL CABLES TO MECHANICAL SERVICES SUPPLY HGT2 FROM DB8 PANELS AND FINAL CONNECTIONS BY OTHER APPLICABLE SERVICES CONTRACTORS.
- DO NOT CEILING SPACE FOR AIR CONDITIONING IN DOOR UNIT. FINAL LOCATION OF OUTLET TO BE CO-ORDINATED WITH THE MECHANICAL SERVICES CONTRACTOR.
- CONNECT TO POWER SUB CIRCUIT FOR BEDROOM.
- ALARM TO ACTIVATE WHEN MANDERER IS WITHIN 500MM RADIUS (ADJUSTABLE) OF THE RECEIVER.
- ALARM TO ACTIVATE WHEN MANDERER IS WITHIN 500MM RADIUS (ADJUSTABLE) OF THE RECEIVER AND THE GATE IS OPEN.



KEY PLAN

Rev	Description	Checked	Date
A	TENDER ISSUE	JVG	18.04.11
B	REVISED TENDER ISSUE	JVG	18.05.11
C	REVISED TENDER ISSUE	JVG	18.06.11
D	CONSTRUCTION ISSUE	SL	21.11.11
E	REVISED PATIENT WANDERING	AJ	10.04.13

Rev	Date
13.03.13	XDC-AGED

ThomsonAdsett

Level 1  
542 Davies Street  
South Melbourne  
VIC 3205  
www.thomsonadsett.com.au

Waterman

Waterman Advisory Pty Ltd  
40 Park Street, South Melbourne, Victoria 3205 Australia  
t: (03) 9685 5900 f: (03) 9685 0999 waterman@waterman.com.au

Project  
ASSISI CENTRE  
EXISTING AGED CARE BUILDING &  
NEW RETIREMENT ACCOMMODATION  
230 ROSAMNA RD, ROSAMNA

Time  
ELECTRICAL SERVICES  
FIRST FLOOR  
POWER, COMMUNICATIONS  
& ACCESS CONTROLS LAYOUT

Drawn P.G. Date AUG 2010

Checked J.V. Scale 1:50 #B1

Drawing No E202 Revisions E

## CONSTRUCTION ISSUE

THESE DRAWINGS HAVE BEEN MARKED  
"CONSTRUCTION ISSUE" ON THE UNDERSTANDING  
THAT THEY ARE TO BE USED AS THE BASIS FOR  
THE COMMENCEMENT OF THE SUB CONTRACTOR'S  
SHOP DRAWING PROCESS.

